

Why choose WHITEY'S™ & THE ORIGINAL CHILI BOWL?



Flash-frozen
for freshness.



Quality ingredients
including fresh IQF
vegetables and 100%
white meat chicken.



Fully cooked items in
boil-in-bag or easy-to-store
tubs for easy preparation—
just heat and serve!



Our products are slow
kettle-cooked for great
flavor without the
prep time!

Homestyle or Traditional American Chili?

Homestyle Chili

Get the great taste of the Southwest with hearty, tasty no-bean chili. Homestyle chili is cooked with red chili powder and other spices that give it a bold and flavorful kick.

Traditional American Chili

This All-American recipe is made with hearty chunks of meat, pinto beans and onions to create a rich, thick chili.

CHILI INGREDIENT TRENDS

CHIPOTLE REMAINS ON THE MENU

24.2% of restaurants
menu chipotle.
*Datassentials



SPICY IS STILL HOT

Spicy foods remain popular,
with 54% of people surveyed
saying they prefer hot/spicy
condiments.
**QSR Magazine



NO LESS THAN THE BEST

Whitey's™ uses only the best
garlic, onion, paprika, red
peppers and jalapeños
in our products.



CHILI ON THE UPSWING

Between 2014 and 2015,
chili menu penetration
rose 3.5%.
***Datassentials



HEAT & SWEET

Chocolate and chipotle, honey
and wasabi, and other sweet-heat
combinations are migrating into
various food categories, enticing
Millennials and baby boomers.
****Food Business News



AJINOMOTO WINDSOR

4200 Concours Street, Suite 100, Ontario, CA 91764
1-800-548-6363

Online tools, websites, social media, apps and more at
AjinomotoWindsorTools.com

Experience the endless possibilities of

HEARTY CHILI



Whitey's Bean & Beef Chili / #48359

CHILI

Product Legend

Dietary	Preparation
V - Vegetarian	M - Microwave
GF - Gluten Free	B - Boil in Bag
	BA - Bake
	TSH - Traditional Saucepan Heating



OCB Traditional American Chili / #48504



Whitey's Chicken Chili / #48360



OCB Traditional Chili / #48504



Whitey's Jalapeño Beef Chili / #48365



OCB Hot Dog Sauce / #48579

The authentic taste of AMERICA

No matter how you serve it up, chili is one of the most versatile items you can menu. From a hearty appetizer to a savory main course, side dish, zesty salad, or potato topper, chili adds warmth and flavor to any meal. Choose from a full line of quality chili items, including beef, chicken and even vegetarian options to please any palate. All of our products are fully prepared, so just heat and serve.

- Vegetable
- Chicken
- Beef with beans
- Beef without beans

WHITEY'S™ PREMIUM CHILI

Whitey's™, our #1 premium, value-added chili, is the best frozen chili in foodservice today. Whitey's™ Premium Chili delivers a rich, hearty gourmet taste experience. Slow-cooked with vine-ripened tomatoes, plump beans, premium beef, and just the right blend of seasonings, Whitey's™ is a great stand-alone option for any foodservice operation.

PRODUCT	DESCRIPTION	APPETIZERS	SOUPS	SALADS	ENTREES	DIETARY	PREPARATION	PACK	EACH	QUANTITY PER CASE	NET WEIGHT	SUGGESTED SERVING SIZE
Chipotle Garden Vegetable Chili 48358	Smoky chipotle flavor and filled with red pepper, mushrooms, zucchini, carrots, corn, onions and three types of beans—pinto, black and kidney.	✓	✓	✓	✓	V, GF	M, B, BA, TSH	4/5 lb. bags	5 lbs.	4 bags	20 lbs.	8 oz.
Beef Chili w/Beans 48359	Loaded with premium beef and beans, fresh tomatoes, onions, herbs and spices; slow cooked for the ultimate in taste and flavor.	✓	✓	✓	✓	GF	M, B, BA, TSH	4/5 lb. bags	5 lbs.	4 bags	20 lbs.	8 oz.
Chicken Chili 48360	For a lighter taste; features select whole pieces of white meat chicken slow cooked with fresh vegetables, herbs and spices.	✓	✓	✓	✓	GF	M, B, BA, TSH	4/5 lb. bags	5 lbs.	4 bags	20 lbs.	8 oz.
Jalapeño Beef Chili 48365	Bold and spicy, featuring premium beef, fresh jalapeño peppers, tomatoes and onions, made in Texas-style tradition, without beans.	✓	✓	✓	✓	GF	M, B, BA, TSH	4/5 lb. bags	5 lbs.	4 bags	20 lbs.	8 oz.

THE ORIGINAL CHILI BOWL®

Original Chili Bowl® is our premium Southwestern bowl-based chili and topper. The authentic, traditional Original Chili Bowl® uses fresh ground beef with tantalizing herbs and spices, kettle-cooked over a slow fire to create warm and hearty comfort food. Available in several different varieties.

PRODUCT	DESCRIPTION	APPETIZERS	SOUPS	SALADS	ENTREES	DIETARY	PREPARATION	PACK	EACH	QUANTITY PER CASE	NET WEIGHT	SUGGESTED SERVING SIZE
Homestyle Chili—w/o Beans 48292	A hearty, traditional, no-bean chili with a Southwestern-style flair. Red chili powder and other select spices add a bold and flavorful kick.	✓	✓	✓	✓		M, BA, TSH	4/5 lb. tubs	5 lbs.	4 tubs	20 lbs.	8 oz.
Homestyle Chili—w/o Beans 48306	A hearty, traditional, no-bean chili with a Southwestern-style flair. Red chili powder and other select spices add a bold and flavorful kick.	✓	✓	✓	✓		M, BA, TSH	6/5 lb. tubs	5 lbs.	6 tubs	30 lbs.	8 oz.
Traditional American Chili w/Beans 48504	Traditional-style chili with hearty chunks of beef and plump pinto beans.	✓	✓	✓	✓		M, BA, TSH	6/5 lb. tubs	5 lbs.	6 tubs	30 lbs.	8 oz.
Hot Dog Sauce—w/o Beans 48579	A savory meat sauce that features a hearty blend of flavorful spices.	✓	✓	✓	✓		M, BA, TSH	6/5 lb. tubs	5 lbs.	6 tubs	30 lbs.	8 oz.

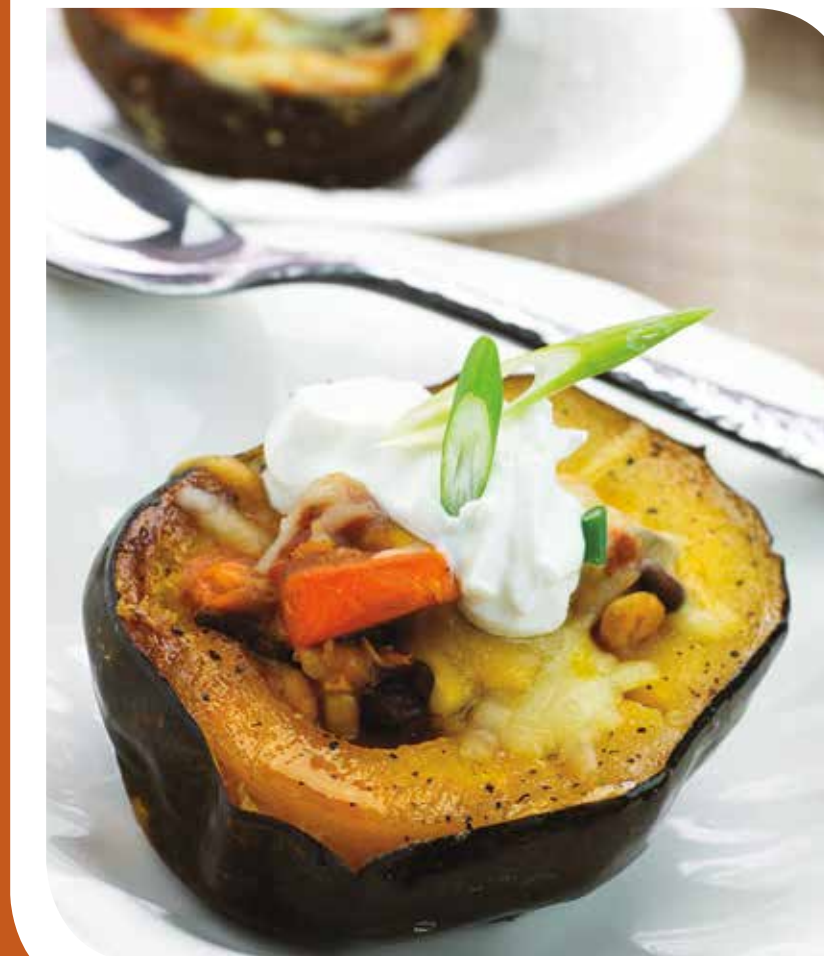
SPECIALTY PRODUCTS

For tacos, burritos, quesadillas, salads and much more, taco meat from the Original Chili Bowl® is an easy way to serve everyone's favorite! Made with lean ground beef and a hearty mix of herbs and spices, slow-cooked in our special Tex-Mex sauce, OCB taco meat saves time, money and labor in the kitchen.

PRODUCT	DESCRIPTION	APPETIZERS	SOUPS	SALADS	ENTREES	DIETARY	PREPARATION	PACK	EACH	QUANTITY PER CASE	NET WEIGHT	SUGGESTED SERVING SIZE
Taco Filling w/Beef and TVP 48397	Made of lean ground beef with a hearty mix of herbs and spices, slow-cooked in our special Tex-Mex sauce.	✓	✓	✓	✓		M, B, BA, TSH	4/5 lb. bags	5 lbs.	4 bags	20 lbs.	2 oz.



Flavor inspiration for MENU SENSATION



CHILI CHEESE SQUASH BOWLS

INGREDIENTS:

- 2 cups Whitey's™ Chipotle Garden Vegetable Chili (#48358)
- 2-2 lb. Acorn squash, halved and seeded
- 1 cup Mexican cheese blend
- ¼ cup Plain Greek yogurt
- 2 Tbsp. Sliced scallions

INSTRUCTIONS:

1. Preheat oven to 375°F.
2. Fill a sheet pan with half an inch of water.
3. Place squash on pan, flesh side down. Roast 35 minutes. Add water as it evaporates.
4. Remove from oven, pouring off any remaining water, and turn flesh side up.
5. Fill each squash half with ½ cup of chili. Top with cheese and bake 12-15 minutes or until chili is hot.
6. Top with yogurt and scallions.



Start planning your menu—scan the QR code to view our Whitey's™ Menu Ideas Brochure for more recipes!



Whitey's™, our #1 premium, value-added chili, is the best frozen chili in foodservice today, delivering a rich, hearty gourmet taste experience. It is slow-cooked the old-fashioned way with vine-ripened tomatoes, plump beans, thick-cut garden vegetables, premium meats and just the right blend of seasonings, then fresh-frozen to seal in flavor. Whitey's chili is easy to prepare—just boil or microwave in the bag. Serve as a delicious appetizer, as a great meal or in a sandwich combo ... the possibilities are endless.



Original Chili Bowl® (OCB) is our high-quality house brand of Southwestern bowl chili and toppers. OCB's legendary flavor has been satisfying hearty appetites for 50+ years. The OCB restaurant in Tulsa, Oklahoma, started cooking chili in 1947. Their original recipe started with fresh ground beef, blended with herbs and spices, then kettle-cooked over a slow fire. Today, the chili is flash-frozen as well to lock in the rich, hearty flavor. The result is a popular chili that has stood the test of time and become more popular than ever.